



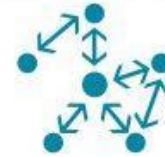
Engagement & Communications

Dr Kate Baker
Director of Agile Rabbit
Senior Research Fellow,
Centre for Water Systems, University of Exeter





Community Participation Model



INTERACTIONS	one-to-many	crowdsourced	cooperative	community-led
COMMUNITY MANAGEMENT GOAL	inform and inspire	obtain feedback, skills, or information	gather resources, including knowledge, to achieve a common goal	create something new together
COMMUNITY ACTIVITIES	read watch listen	comment vote / like tag	discussion knowledge exchange production	integration and synthesis multi-directional learning co-production
POWER BALANCE	organization as expert	organization as convenor	scaffolded cooperation	mutual sharing and learning; (near) equity
SLOGAN	here's something interesting	give us some feedback	how can we work together?	what shall we do next...?





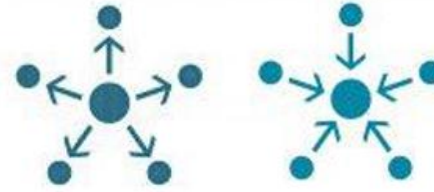
Investigating how rain, river and wastewater move through Eastbourne and southern Wealden, to help reduce the impact of flooding. Using smart technology to monitor water in real time

Funded by DEFRA's Flood & Coastal Resilience Innovation Programme (FCRIP)



Communication

Raise awareness of flood risk and improve people's understanding of how water moves through the catchment



Engagement

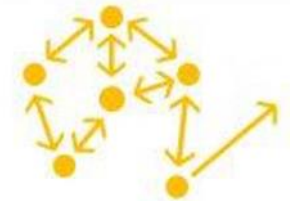
Ensure local stakeholders are at the heart of the decision making and learning throughout the project. We want to align, partner, and support local initiatives

Create a water environment that is in harmony with its users by supporting collaboration between local government, Environment Agency, local business, leisure users, and communities



Public engagement with Research

Use local knowledge to guide the research and management of the water bodies



Asset Based Community Development (ABCD)

1: Listening & early Engagement: Listening and collect stories (e.g. community radio)

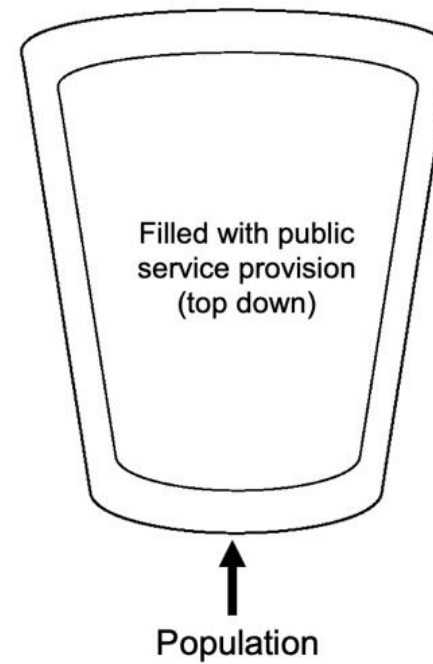
2: Connectors: Working with community leaders and local organisations

3: Mapping: Map the skills, capacities, and assets (e.g. with an interactive online map)

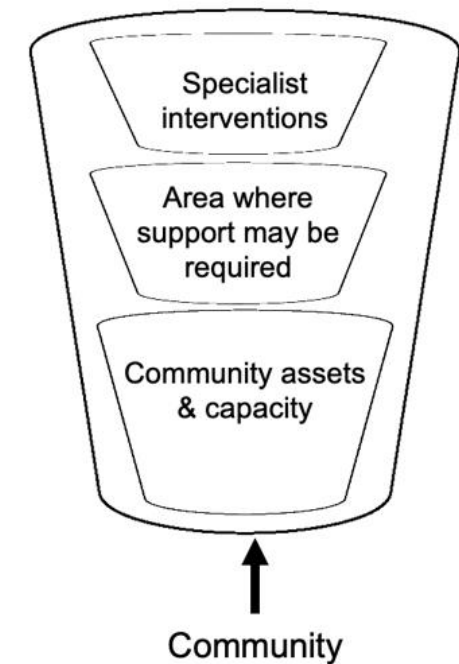
4: Support community to lead the vision and plan (e.g. community fund, events)

5: Stepping back

TRADITIONAL APPROACH



ASSET BASED COMMUNITY DEVELOPMENT



Early engagement using community radio



Community Radio was used as a method to explore the FCRIP Blue Heart project area, meet local residents and business owners, and familiarise ourselves with existing networks and relationships.

This information created the foundation for the engagement strategy

The story of Blue Heart
is told by the community.
Listen here



University
of Exeter





Blue Heart Community Map
Added 5 months ago

+ Add contribution

Contribution
andythegreene added 3 months ago | Blue Heart updated 3 months ago

Water

Data Media Comments

Type
Areas prone to flooding

Name or basic description
Road bridge prone to flooding

Details
Rattle Road crosses the Rattle Stream at this point. During an intense rainfall event the Rattle Stream can fill up very quickly and overflows Rattle Road at the precise point where it crosses the stream, as the culvert that takes the stream under the road has very limited capacity. Cars have been known to become stuck in the flood waters at this point. Recent large housing estates built very near the Rattle Stream have significantly exacerbated the risks of flooding at this point.

Links

A map view showing the location of the flooding risk. The map is centered on Rattle Road near Westham. A yellow circle highlights the specific area where the Rattle Stream crosses Rattle Road. The map includes various street names like Hankham, Westham, and Pevensey and Westham, and road numbers like B2104, B2191, and A259.

Blue Heart Community Fund

The people of Eastbourne and southern Wealden were invited to suggest activities that will help:

- Manage flooding or drought
- Reduce the impact of climate change
- Increase sustainability, or protect the natural environment.

The Community Fund is supporting six projects this year, with a total payout of £22,300.





blueheartsussex ...

Following ▾

Message



Blue Heart

Investigating how water works in Eastbourne and southern Wealden, to help reduce the impact of flooding in the future. Comms by @agilerabbitevents
www.blueheart.org.uk

Followed by ntgates and kimnetcro

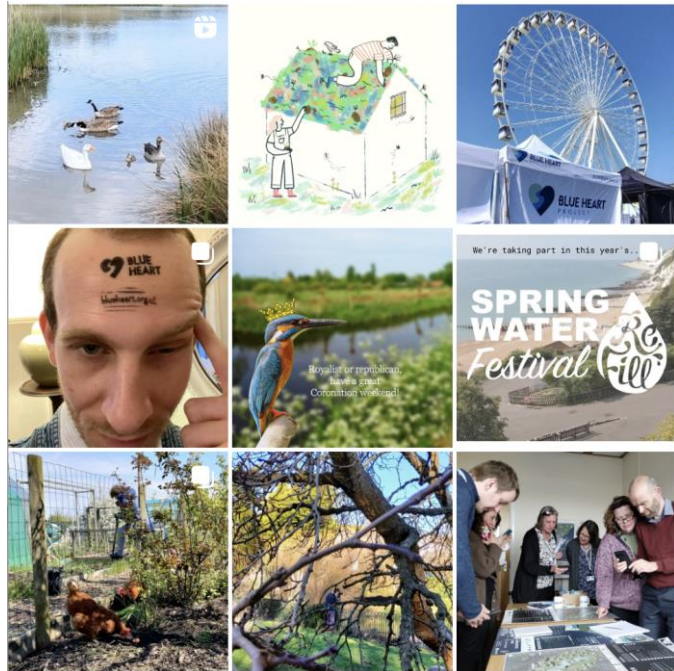


Eastbourne

Events

Out and a...

Pevensey





Engagement & Communications

Dr Kate Baker
Director of Agile Rabbit
Senior Research Fellow,
Centre for Water Systems, University of Exeter

